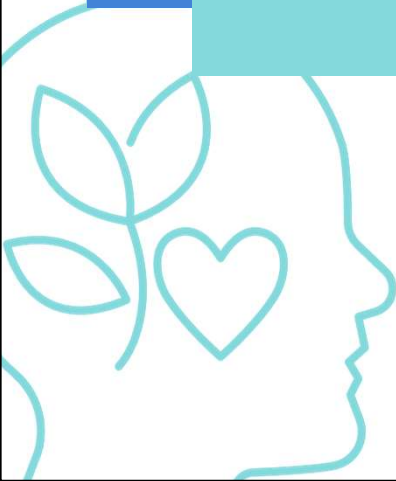


Portishead wellbeing workshops

17 April 2024

End of life conversations



1

Ethera Morgan - Social Work Team Manager & Carers Lead
Caroline Mundy – Head of Clinical Engagement



www.stpetershospice.org

  /stpetershospice
Registered Charity No. 269177



2

End of life

- What and when do we mean by this?
- Be mindful that we all might mean different things, and different time frames
- Consider what is important to you – person centred
- Advance care planning – a discussion, a process - should not be 'one-off' & it is entirely voluntary

Examples of advance care planning might be:

- Exploring your options of care
- Identifying your wishes and preferences, letting those important to you know these
- Identifying who you would like to be consulted on your behalf if you are not able to

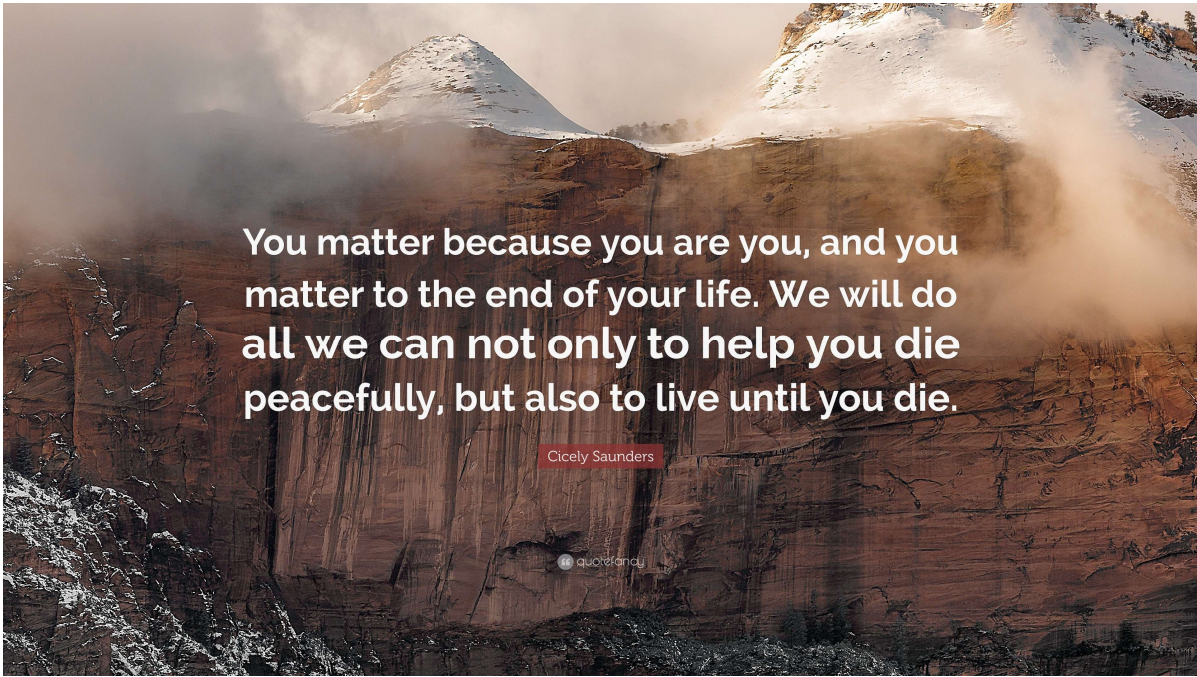
3

The hospice movement

- The Hospice movement was founded by Dame Cecily Saunders in 1967 - St Christopher's Hospice, London.
- St Peter's Hospice started on 1978, with our 1st community nurse.
- St Peter's Hospice is a local charity that provides care and support to adults who are living with a progressive life-limiting illness in the Bristol, South Gloucestershire and North Somerset area.
- In 2022 we had over 3000 referrals.
- 90% of our care is in people's homes.

People receiving our care have a wide range of conditions, including cancer, heart failure, lung disease and neurological illness. Support is focused around the physical, psychological, social and spiritual issues that can arise because of serious illness, to improve the quality of a person's life - Everyone is unique, and we provide support with that in mind.

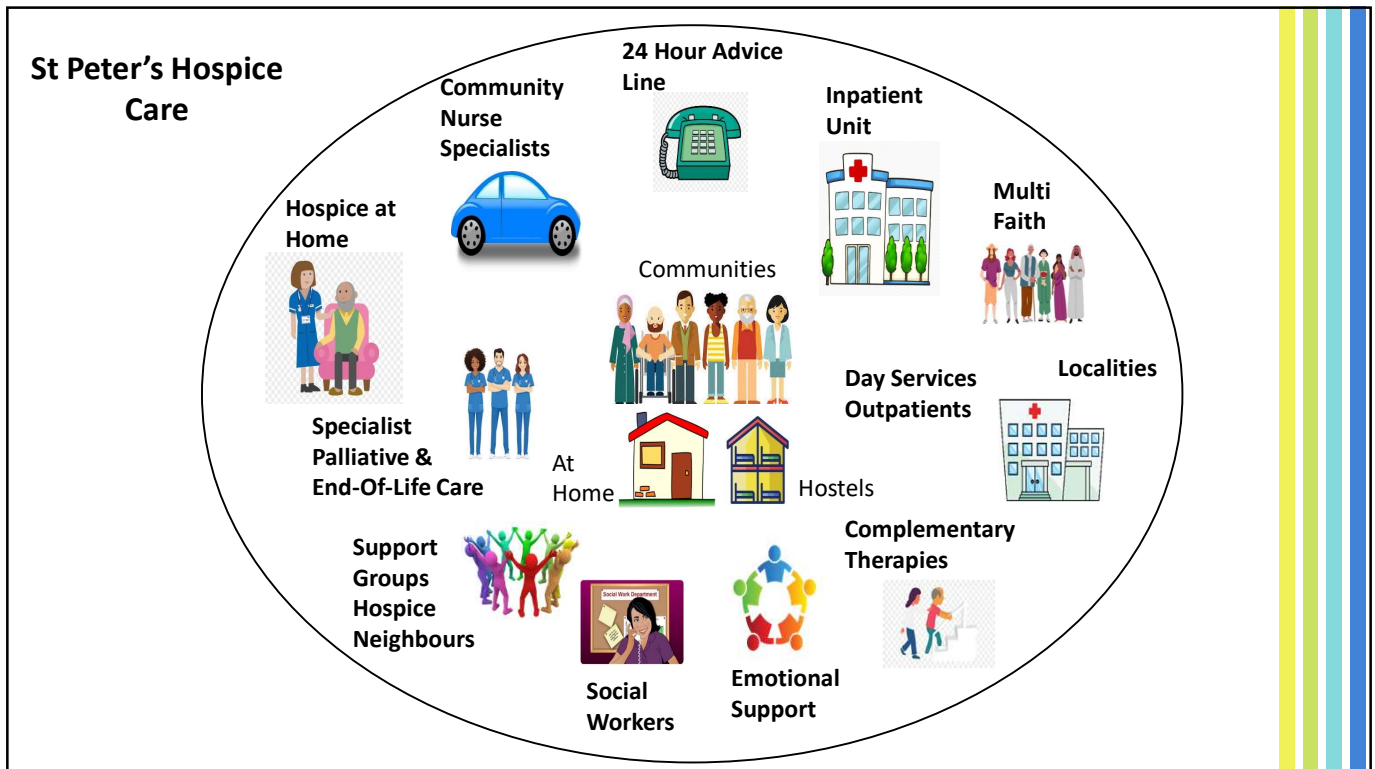
4



5



6



7

How we are funded

- We need to raise £25,000 every day, to run our patient services
- 18% of our costs are funded by the NHS (20% in 2022)
- The remainder is dependent on our fundraising:
 - Retail: shops and online
 - Fundraising:
 - Hospice organised events
 - Supporter activities/events
 - Support groups
 - Legacies (gifts in wills)
 - Investment gains

Thank you for your support



8

St Peter's Social Work Team



- Team consists of a mix of social workers and social work assistants.
- Experience and understanding about the practical challenges of planning ahead with a life limiting illness can bring

9

Benefits & Grants



PIP / attendance allowance / carers allowance

Macmillan grants & others

Debt management

10

Planning for the future

Areas of consideration:

- Considering Lasting Power of attorney or other formal arrangements for decision making
- Advance care planning
- Thinking about dependents (children, pets, those you care for)



11

Options for care & support

- Eligibility for funding – e.g. local authority and NHS
- Place of care, local services: e.g. Care at home / nursing home
- Hospice services both at home and onsite for end of life
- Other voluntary services



The gift of an hour of care for a patient in the comfort of their home from a St Peter's Hospice at Home nurse

12

Types of Carers support:

- Drop in support sessions
- Carers assessments
- Carers help line
- Consulting carers about what is helpful for them
- Young Carers
- Psychological support sessions (in person and online)



13

Wards Solicitors

Laura Jakeways



14

What is a will

- Legal Document
- Speaks from death
- Reflects your wishes regarding who receives your wealth
- Reflects your character: funeral directions, pets and chattels
- Maintains choice of beneficiaries
- Maintains choice of executors and trustees
- Peace of mind
- Protection of your chosen beneficiaries



15

What wills do

- Put your wishes into words
 - Funeral directions
 - Pets
 - Family heirlooms
- Choice
- Executors – family/friends/professionals
- Peace of mind
- Protection

16

Capacity required

- Extent of their estate
- Have they considered their moral obligation
- Do they know and approve the contents of the Will
- Nature of the act of making a Will
- MCA 2005 requirements

17

Inheritance tax

The Nil Rate Band £325,000 until 2025/2026

- Transferable Nil Rate Bands
- Residential Nil Rate Band
- Is Inheritance Tax planning still necessary?
 - Second marriages
 - Nil Rate Band discretionary trusts

18

The alternative - Intestacy

- Statutory rules govern your estate
- Expensive Problems
 - Loss of control
 - Family arguments
 - No tax planning
 - Co-habitees, step-children not included



19

Making your will

- Home-made or Professionally drawn?
- Beware of unregulated Will Writers
- Storage costs
- Regular reviews
- Wards Will Writing Services
 - Free initial consultation
 - Free Will review
 - Home visits if required
 - Free storage
 - Will packs



20

Digital media

- Internet based accounts and data storage
 - Online bank accounts
 - Shopping and selling – Tesco, Ebay, Paypal
 - Data uploads - iCloud, Flickr
- Social media
 - Facebook, Twitter
 - LinkedIn
 - Online gambling and gaming
 - Chatrooms and discussion forums
- Digital downloads
 - iTunes
 - Netflix

21

Review is key

- Legislation changes quickly
- Personal circumstances change
- Financial circumstances change
- Technology changes



22

Portishead Funeral Services

Ashley Watkins-Pyle



PORTISHEAD
Funeral Services
Independent Funeral Directors

23

When a loved one dies

At home

When a death takes place at home:

Your first steps when someone passes away is to contact their local doctor during working hours. Outside of working hours you contact 111. It will then be arranged for a doctor or district nurse to attend and verify the death.

Once verification has been completed the Doctor will inform you that your chosen funeral director can now collect and take back into their care.

The Doctor will produce a MCCD (medical certificate of cause of death). The doctor's surgery will then send this to the registrars enabling you to register the death.

24

When a loved one dies

At a nursing home

When a death takes place at a nursing home:

When someone passes away at a nursing home, if present a nurse will verify the death. If not present the nursing home will contact the local doctor to attend and verify. At the time of death, the next of kin will be informed.

Most care homes have within each care plan the funeral director chosen by the family. Once verification has been completed the care home will contact the appointed funeral director, to collect and bring them into their care.

The Doctor will produce a MCCD. The doctor's surgery will then send this to the registrars enabling you to register the death.

25

When a loved one dies

At a hospital

When a death takes place at a hospital:

When someone passes away at a hospital the death will be verified by the doctor or nurse present. The family will then be informed of the death by the bereavement team. They will also ask which funeral director you have appointed.

Most hospitals require a signed release note to arrange the collection of a deceased. This is usually completed when meeting with your funeral director.

When the MCCD has been completed the hospital will contact the next of kin to inform them of the registration process.

26

Registering a death

Unless the death occurs within a hospital you are not always informed of the registration process. The death must be registered within the district where the death occurred. Contact details for the registrars can be found online or given to you by your funeral director.

Your initial contact will be to make an appointment to register the death. The registrar will book an appointment once they have received the paperwork they require. All appointments are conducted face to face at a registration office.

During your appointment, the registrar will ask questions about the deceased. Sometimes documents like birth certificate and passports can help answer the questions. Once complete you will be given the death certificates, each is £11. The quantity needed is up to you, generally 5-6 is enough. You will also be given a Green Form which is green in colour. This is the certificate for burial or cremation and should be passed to your funeral director.

27

Funeral arrangements

After a loved one dies your first meeting with the funeral director is to discuss the funeral arrangements. This can be done within a funeral directors' office or in the comfort of your own home. During the meeting we will discuss yours and your loved ones wishes. During the meeting we will also discuss the funeral date and location and book this in.

There is no rush for anything, we understand that it can be a very difficult time. The arrangements don't have to be done in one sitting and we can meet as many times as needed to discuss the different aspects of the funeral.

28

Chapel of rest

- Where is my loved one kept?
- Can they be dressed in their own clothes?
- Do they need to be embalmed?
- Can I visit my loved one?
- What to expect if I visit?



29

Your local crematoria

Canford Crematorium



30

Your local crematoria

South Bristol Crematorium



31

Your local crematoria

Weston Crematorium



32

Your local crematoria

Westerleigh Crematorium



33

Ministers & Celebrants

The funeral service is the most important part of the funeral. Unless you are aware of someone able to take the service you will usually rely on the funeral director recommending someone to you. There are many options for you from church ministers to celebrants. Each providing a personal service to celebrate a loved one's life.

Usually during arrangements, we will discuss if you have a preference for the person taking the service. The funeral director will contact them and pass on your details for them to arrange a meeting at a later date. During this meeting they will discuss the service and what you would like included. Any hymns, reading or poems etc.

If you are unsure of someone taking the service, please do inform your funeral director as it is never a final decision, and the service has to be right for you and your family.

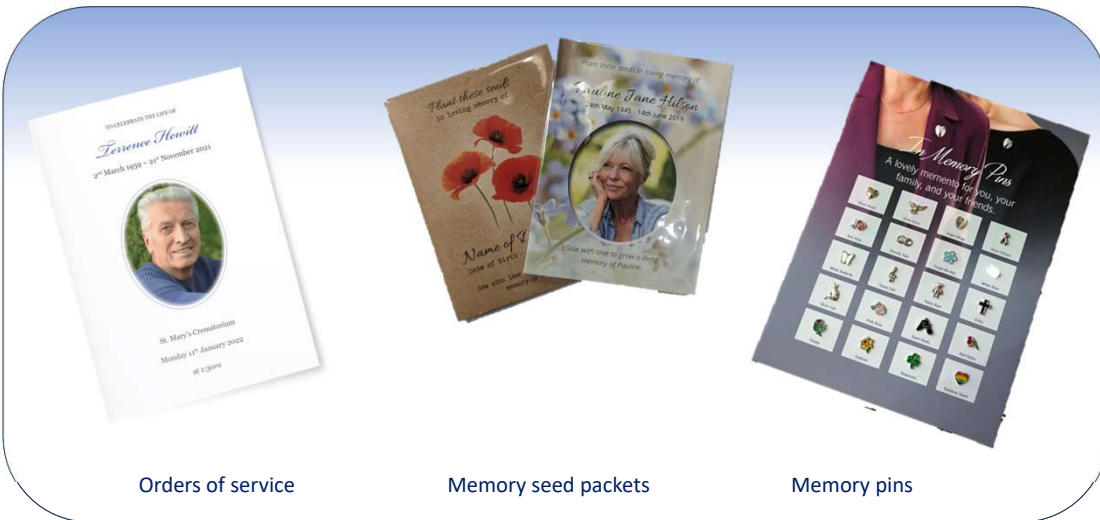
34

Coffins



35

Funeral stationery



Orders of service

Memory seed packets

Memory pins

36

Alternative hearses



37

Floral tributes



38

Options with the ashes



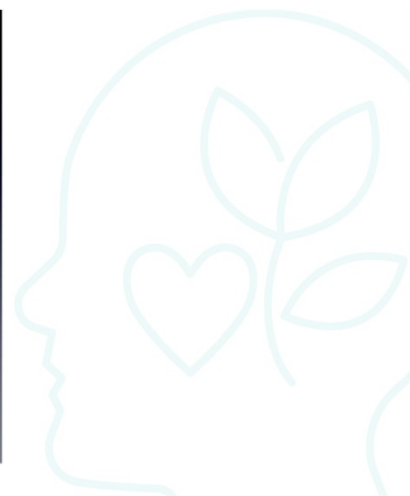
39

Portishead Church of England

Rev Mark Fuller



Rev Mark Fuller
Portishead Church of England



40