

# Portishead wellbeing workshops

19 October 2024

## End of life conversations



# End of Life Conversations Portishead 2024 St Peter's Hospice

**Ethera Morgan - Social Work team manager & Carers lead**  
**Caroline Mundy – Head of Clinical Engagement**



[www.stpetershospice.org](http://www.stpetershospice.org)

  [/stpetershospice](https://www.facebook.com/stpetershospice)

Registered Charity No. 269177



**St Peter's Hospice**  
For Patients, Families and Bristol

# End of Life....

- What and when do we mean by this?
- Be mindful that we all might mean different things and different timings.
- Considering what is important to you – person centred
- Advance care planning – a discussion, a process. **Entirely voluntary**
- Documents such as ReSPECT form.

## Examples might be:

- Identifying your wishes and preferences
- Identifying who you would like to be consulted on your behalf
- Letting people know your wishes (including future support)
- Appointing someone to make decisions for you if you are not able to

[www.stpetershospice.org](http://www.stpetershospice.org)



**St Peter's Hospice**  
For Patients, Families and Bristol



# St Peter's Hospice

Started in 1978, with our 1<sup>st</sup> community nurse.

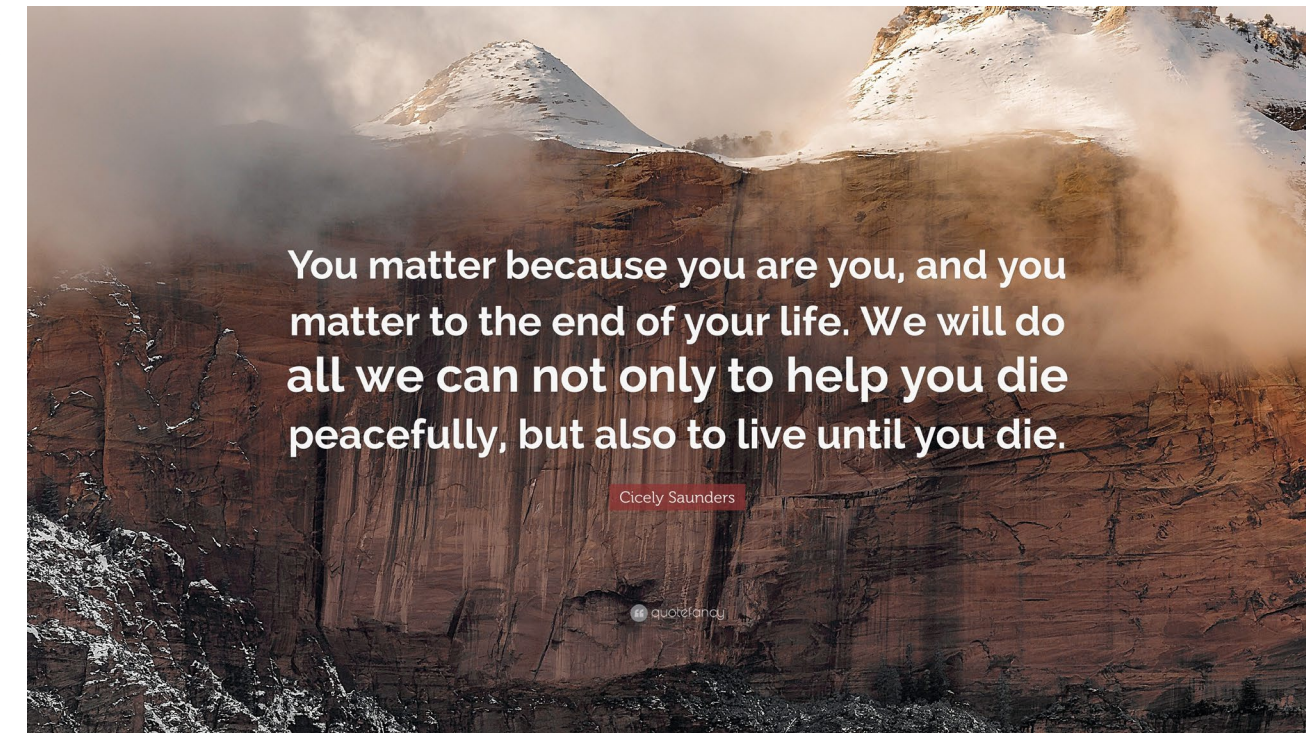
A local charity that provides care and support to adults who are living with an incurable illness in the Bristol, South Gloucestershire and North Somerset.

In 2023/24 we had 3277 referrals.

90% of our care in people's homes.

People receiving our care have a range of conditions including cancer, heart failure, lung disease and neurological illness.

Support is focused around the physical, psychological, social and spiritual issues that can arise because of serious illness, to improve the quality of a person's life. Everyone is unique, and we provide support with that in mind.

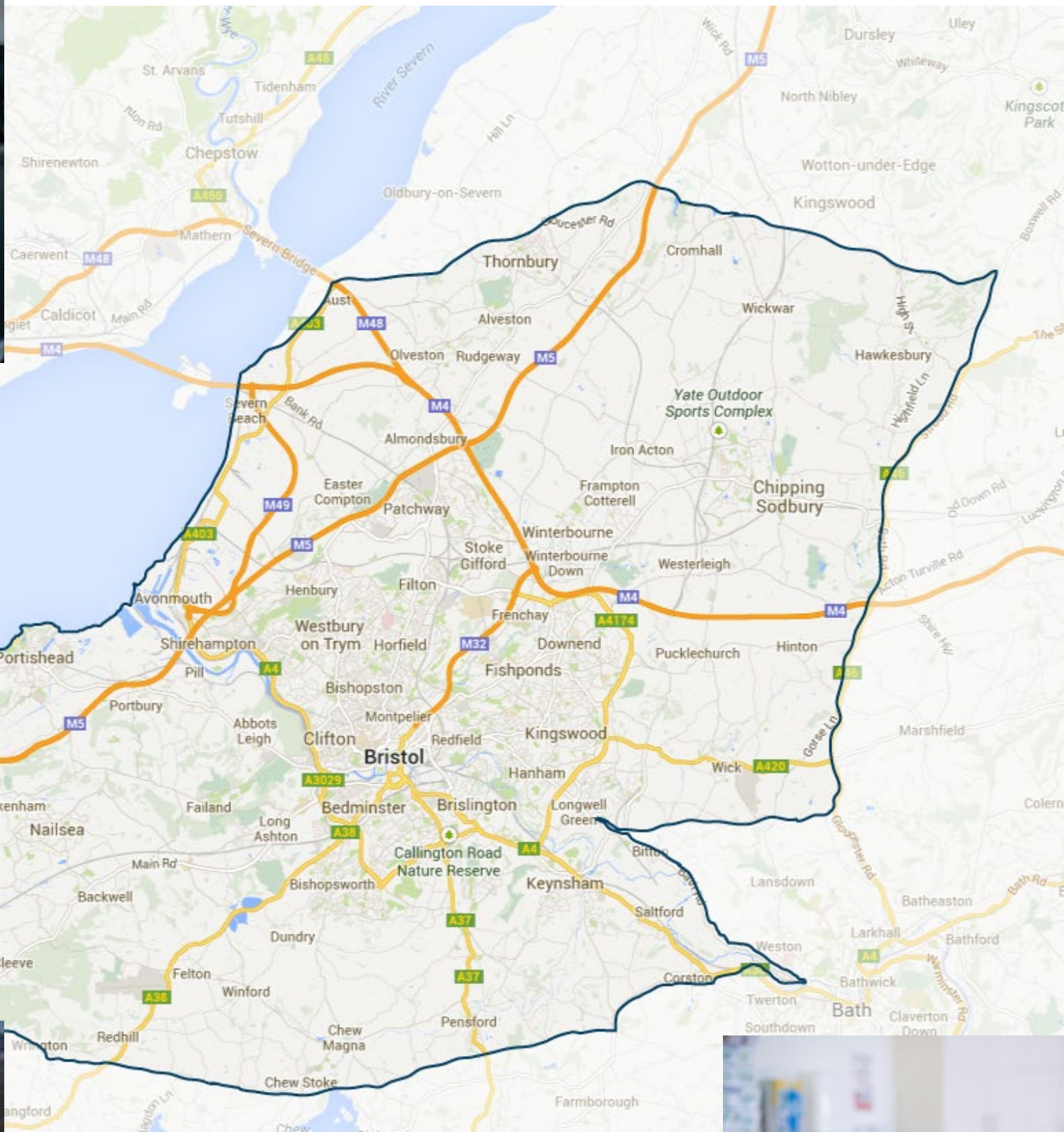


[www.stpetershospice.org](http://www.stpetershospice.org)



**St Peter's Hospice**  
For Patients, Families and Bristol





[www.stpet](http://www.stpet)



**Hospice**  
Families and Bristol



# Hospice Care

Community Nurse Specialists



24 Hour Advice Line



Inpatient Unit



Multi Faith



Hospice at Home

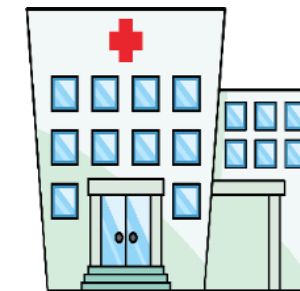


Medical team



Complementary Therapies

Localities



At Home



Hostels

Support Groups, Hospice Neighbours



Volunteers



Social Workers



Emotional Support

Day Services & Therapy Team



# How we are funded:

We need to raise £27,000 each day to run our patient services.  
20% of our costs are funded by the NHS.

The remainder is dependent on our fundraising:

Retail: shops and online

Fundraising:

- Hospice organised events
- Supporter activities/events
- Support groups

Legacies (gifts in wills)

Investment gains

[www.stpetershospice.org](http://www.stpetershospice.org)



**St Peter's Hospice**  
For Patients, Families and Bristol



## St Peter's Hospice Social Work Team



---

2 social workers and 2  
social work assistants

---

Independent of the  
council's adult social care  
services

---

Good knowledge of/links  
with the health and social  
care system and local  
services

---

Experience and  
understanding about the  
practical challenges of  
planning ahead with a life  
limiting illness can bring

[www.stpetershospice.org](http://www.stpetershospice.org)



**St Peter's Hospice**  
For Patients, Families and Bristol



# Financial plans



[www.stpetershospice.org](http://www.stpetershospice.org)



**St Peter's Hospice**  
For Patients, Families and Bristol

# Planning for the future

- Considering Lasting Power of attorney or other formal arrangements for decision making
- Advance care planning
- Thinking about dependents (children, pets, those you care for)



[www.stpetershospice.org](http://www.stpetershospice.org)



**St Peter's Hospice**  
For Patients, Families and Bristol



# Wills

- Different ways of recording your will
- Making your will legally binding
- Instructions for your funeral



## Options for Care & support

- Funding-local authority/self funding and NHS
- Care at home/nursing home
- Hospice at home for the last weeks of life
- In patient unit
- Other voluntary services



[www.stpetershospice.org](http://www.stpetershospice.org)



**St Peter's Hospice**  
For Patients, Families and Bristol



# Carers Support

- Drop in support sessions
- Carers assessments
- Carers help line
- Consulting carers about what is helpful for them
- Young Carers
- Psychological support sessions (in person and online)



[www.stpetershospice.org](http://www.stpetershospice.org)



**St Peter's Hospice**  
For Patients, Families and Bristol

## Other support available from social work team

- Supporting St. Peter's patients with practical issues & worries
- Dealing with housing concerns
- Liaising with other agencies/social work advocacy
- Staying safe



[www.stpetershospice.org](http://www.stpetershospice.org)



**St Peter's Hospice**  
For Patients, Families and Bristol



# Digital legacy

Digital legacy

<https://www.mywishes.co.uk/>

[What is a digital legacy? - Digital Legacy Association](#)

The Digital Legacy Association believe that only once someone understands the value of their own digital legacy will they be motivated and therefore make suitable plans to address this area.



# Resources

[Planning Ahead: What matters most to you | Welcome \(advancecareplanning.org.uk\)](https://advancecareplanning.org.uk)

[End of life care - NHS \(www.nhs.uk\)](https://www.nhs.uk)

[Why plan ahead? - NHS \(www.nhs.uk\)](https://www.nhs.uk)

[Advance statement – Compassion in Dying](#)

[Make, register or end a lasting power of attorney: Overview - GOV.UK \(www.gov.uk\)](https://www.gov.uk)

[www.stpetershospice.org](https://www.stpetershospice.org)



**St Peter's Hospice**  
For Patients, Families and Bristol



# Wards Solicitors

Laura Jakeways



# What is a will

- Legal Document
- Speaks from death
- Reflects your wishes regarding who receives your wealth
- Reflects your character: funeral directions, pets and chattels
- Maintains choice of beneficiaries
- Maintains choice of executors and trustees
- Peace of mind
- Protection of your chosen beneficiaries





# What wills do

- Put your wishes into words
  - Funeral directions
  - Pets
  - Family heirlooms
- Choice
- Executors – family/friends/professionals
- Peace of mind
- Protection

# Capacity required

- Extent of their estate
- Have they considered their moral obligation
- Do they know and approve the contents of the Will
- Nature of the act of making a Will
- MCA 2005 requirements



# Inheritance tax

The Nil Rate Band £325,000 until 2025/2026

- Transferable Nil Rate Bands
- Residential Nil Rate Band
- Is Inheritance Tax planning still necessary?
  - Second marriages
  - Nil Rate Band discretionary trusts

# The alternative - Intestacy

- Statutory rules govern your estate
- Expensive Problems
  - Loss of control
  - Family arguments
  - No tax planning
  - Co-habitees, step-children not included



# Making your will

- Home-made or Professionally drawn?
- Beware of unregulated Will Writers
- Storage costs
- Regular reviews
- Wards Will Writing Services
  - Free initial consultation
  - Free Will review
  - Home visits if required
  - Free storage
  - Will packs





# Digital media

- Internet based accounts and data storage
  - Online bank accounts
  - Shopping and selling – Tesco, Ebay, Paypal
  - Data uploads - iCloud, Flickr
- Social media
  - Facebook, Twitter
  - LinkedIn
  - Online gambling and gaming
  - Chatrooms and discussion forums
- Digital downloads
  - iTunes
  - Netflix

# Review is key

- Legislation changes quickly
- Personal circumstances change
- Financial circumstances change
- Technology changes



# Portishead Church of England

Rev Mark Fuller



**Rev Mark Fuller**  
Portishead Church of England





# Portishead Funeral Services

Ashley Watkins -Pyle

PORTISHEAD

Funeral Services

Independent Funeral Directors

